

## Thin Nyloc Nut

**Thread Type:** Metric - Coarse

**Thread Direction:** Right Hand

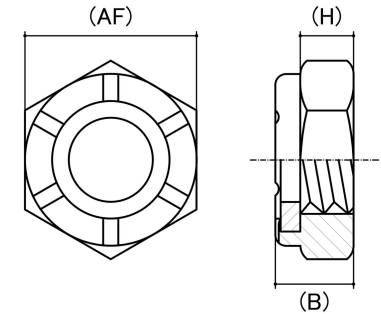
**Material:** Carbon Steel

**Class Grade:** Low Tensile Class 4

**Finish:** Zinc Plated

**Corrosion Protection Level:** Moderate

**Standard:** ISO 10511



*CAD drawings shown for graphic representation only.\**

Size	Thread Pitch (mm)	Thread Type	Overall Nut Height (B) (mm)		Hex Height (H) (mm)	Across Flats (AF) (mm)		Spanner Size (AF) (mm)	sku (qfind)
			Min	Max	Nom	Min	Max		
M10	1.50	Coarse	7.98	8.56	4.70	16.73	17.00	17	41NL10
M12	1.75	Coarse	9.53	10.23	5.70	18.67	19.00	19	41NL12
M16	2.00	Coarse	11.32	12.42	7.42	23.67	24.00	24	41NL16
M20	2.50	Coarse	14.10	14.70	9.10	29.16	30.00	30	41NL20
M24	3.00	Coarse	16.90	17.50	10.90	35.16	36.00	36	41NL24
M30	3.50	Coarse	21.10	22.20	13.90	45.00	46.00	46	41NL30
M36	4.00	Coarse	24.50	25.40	16.90	53.80	55.00	55	41NL36

**Disclaimer:**

Dimensional data and technical information was obtained from publically available sources and not acquired through standard agencies. It has been completed and compiled for reference purposes only; where discrepancies are found they are subject to change without notice. Bolt & Nut Australia makes no warranties or representations regarding the accuracy and validity of the compiled information and data. Contact the relevant standard authorities for accurate and detailed information.

\* CAD drawings may not reflect diameter, thread length or overall length.

© Bolt & Nut Australia Pty Ltd. All rights reserved.

Version: 18 Mar 2024